



**missiolinkinternational**  
Partnering Christians in Witness and Action  
since 2001



MISSIO LINK INTERNATIONAL FOUNDATION  
22 I. BARAC, 300151 TIMISOARA, ROMANIA

office@mli.ro

www.mli.ro

Fundația Missio Link International

Alpinis - Fundația Missio Link International

SPeR - Fundația Missio Link International

**M** MissioInternational  
Facilitating Ministry in Romania

P.O. Box 10967

Knoxville, TN 37939

info@missiointernational.org

865.803.9820

www.missiointernational.org

www.facebook.com/MissioInternational

# ANNUAL REPORT 2022



**missiolinkinternational**  
Partnering Christians in Witness and Action  
since 2001

## OUR MISSION

Missio is a Latin word used to speak of the “*mission of God*”, that is, *missio Dei*. As a name, *Missio Link International* reflects the calling and vision of the MLI team to take part in that mission.

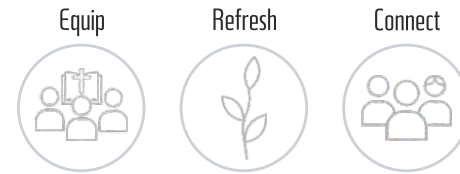
Pastor Eugen Groza (1954-2018) and a group of capable Romanian leaders who worked together for over 25 years, formed MLI in 2001 to address the material and spiritual needs of the Romanian people through a variety of successful ministry initiatives, including **Church in Mission, Alpiniș Leadership Center** and **Children at Risk**.

We equip, resource and enable leadership and ministry in local churches and through the Alpiniș Leadership Center. We act in prevention and assistance for girls who are survivors of severe abuse and traffic and for disadvantaged children in Romania.

With a common bond of Christian values, we partner with churches, organizations and individuals, from Romania, USA and Europe. Our partnerships are based on relationships of trust and accountability, sharing resources, prayer, and work in Christian witness and action.



### Church in Mission



MLI equips and enables local churches in their mission through two programs:

- Church Partnering
- Leadership Development

### Alpiniș Leadership Center



The ALC embodies our vision to facilitate the formation of Christian values and character and to equip the younger generation in Romania through outdoor and leadership development programs.

ALC programs:

- Alpiniș Youth Programs, camps & outdoors
- The Păltiniș Leadership Institute, training & mentoring

### CAR - Children/Youth At Risk



The Children at Risk programs address the physical and spiritual needs of the most disadvantaged category in Romania. The programs naturally fit into these categories:

- Prevention: **Back to School**
- Rescue and Healing: **Deborah House**
- Providing a future: **Aspirations** and **Harmony**

## CHURCH IN MISSION

### Inside Out



We desire to see transformation in churches and communities.

Today, we are observing an awareness, a complementary focus in many churches that includes a commitment to spiritual formation and an appreciation for community transformation. We call this initiative INSIDE OUT!



We believe that healthy churches honor God by calibrating themselves to look inward and outward. Inward refers to Spiritual Formation, the disciplined development of Christian character. Outward reflects Community Transformation, the missional engagement of neighbors and neighborhoods.



# CHURCH PARTNERING

Probably the best, although unplanned, expression of the INSIDE-OUT focus of our ministry is the outstanding response of the Romanian Evangelical churches to the Ukrainian refugee crisis. Church partners have become outposts of shelter and provision for refugees. A whole network of believers came together as one body to help. MLI and our partners in the USA have become part of this work. MLI also partnered with other Romanian churches and NGOs in addressing the Ukrainian crisis without adding new staff for this work.



Vacation Bible School in Cărpiniș, Romania - Serve Youth, Northern Ireland, UK



Rev. David Park, Northern Ireland, UK and Pastor Florin Iosub, MLI, visit to Buzău area, RO



Visit to the Holly Trinity Baptist Church, Fetești, Romania

# Ukraine Refugee Crisis Update

Significant action points:

- Partnering with Romanian churches on the border with Ukraine.
- Providing regular resources for three centers hosting refugees on the first line and helping them move on to other locations. Specific partnerships between Zionsville Presbyterian Church, IN, and Romania partners hosting and helping refugees, such as Campina, Medgidia, Cluj, Alba Iulia, Timisoara, and Giurgiu.
- Providing food, hygiene products, and Gospel literature to centers hosting refugees in Ukraine and churches in Ukraine helping in their communities.
- Transportation of refugees. Our van served daily at the Isaccea customs on the Danube near Tulcea for over six months. The MLI van was named “The Blue Beauty” and proved very useful.
- We purchased a van for ministry and made regular transports of relief aid consisting of food, hygiene, and produce to Ukraine.
- In a coordinated effort with other churches and organizations, we made one trip/month into Ukraine, in the Cernauti area, taking food to a warehouse coordinated by churches in Ukraine. Every transport we send has been distributed immediately, reaching as far as Odessa, Kyiv, and various regions in Ukraine.

- In partnership with our church partner in Tulcea, we provided resources for IntegrAll, a six-month program for Ukrainian refugees, especially children in the Tulcea (Romania) and Izmail (Ukraine) areas.
- We donated a piece of commercial kitchen equipment from Alpinis to a Christian refugee camp hosting 120-150 refugees between Izmail and Odesa, Ukraine.

*We continue to pray, asking God to end this war and suffering.*



"The Blue Beauty" - refugee transport, Isaccea, Ukrainian Border, RO



Ukraine - refugee camp in Cernăuți

# LEADERSHIP DEVELOPMENT



Kenny Woodhull, MI, USA &amp; Florin Iosub, MLI, RO - Intensive Training, ALC.



Câmpina Regional Training - pastor Valentin Făt, Timișoara, RO



Pastors Conference, Sinaia, RO



MLI's focus on equipping and enabling local churches in Romania continues after lifting the pandemic restrictions and throughout the unexpected Ukrainian crisis on our border. The support from GROVE Group, ZPC, Tabernacle Presbyterian, West Park Baptist Church, and other partners through MI was critical to continuing the Church Based Leadership Development program.

Highlights from 2022 include:

- ✓ The coordination team and several pastors met at Alpiniș Leadership Center in light of the new Theological Formation Project.
- ✓ Regular online meetings with our key partners continued every two months for sharing updates, mutual encouragement, evaluation of needs, and planning – coordinated by Florin Iosub
- ✓ March 2022: Regional Training in Câmpina, north of Bucharest where over 40 church leaders and workers, men and women, participated. The training theme was "Worship and relationships in times of crisis". Trainers – Pastor Valentin Făt and Pastor Florin Iosub, from Timișoara, Romania.
- ✓ May 2022: Regional Training with our church partners in southern Romania, in Alexandria. Trainers: Pastor Marius Birgean, Pastor Valentin Făt, Pastor Florin Iosub, from Timișoara, Romania.



Kenny &amp; Doris Woodhull, MI, USA - Intensive Training - ALC

- ✓ June 2022: Intensive training at Alpiniș led by Prof. Dr. Kenny Woodhull – Knoxville, TN, USA, MI President, on the theme "The Parable of God".
- ✓ September 2023: The MLI Pastors' Conference, with approximately 100 participants. The theme of the conference was "Overcoming the virus of fear". Trainers: Pastor Sam and Susan Polson, Knoxville, TN, USA.
- ✓ October 2022: Intensive training at Alpiniș focused on the formation of the Christian character. Trainer: Dr. Carey Akin, Global Servant Leaders, Marietta, GA, USA.
- ✓ December 2022: Regional training in Campina. Trainer: Pastor Florin Iosub on the theme of Evangelism.
- ✓ We translated Pastor Sam's book "Corona Victus" into Romanian, now available.
- ✓ Three hundred eighty-five participants enrolled in study groups in 19 active centers meet regularly following the Bible Education curriculum.

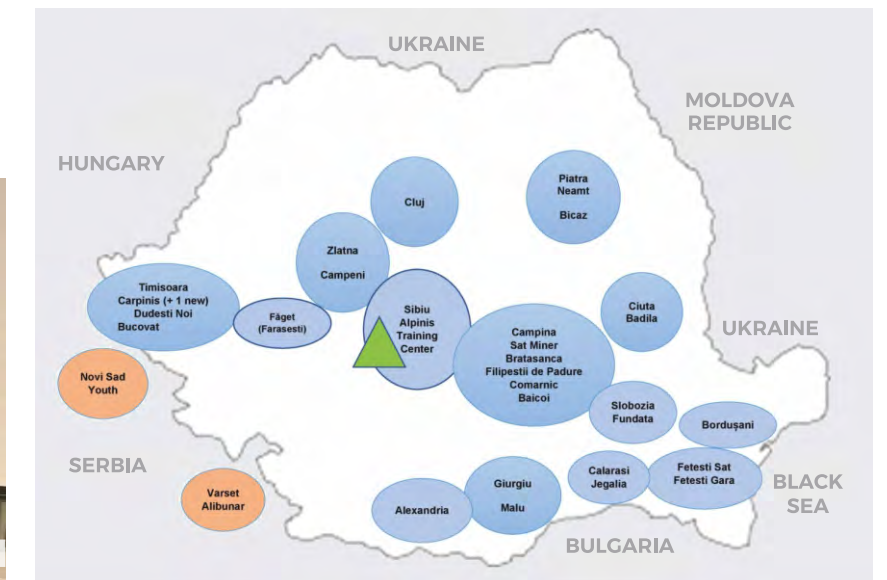


Pastor Sam &amp; Susan Polson, USA, Emil &amp; Adriana Toader, Florin &amp; Lili Iosub, MLI, RO - Pastors Conference.



Dr. Carey Akin, USA - Intensive Training, ALC

## Romanian Map - MLI Leadership Development Areas 2022





2022, What a Year!

# ALPINIȘ LEADERSHIP CENTER (ALC)

## Project Development and Operation

- ✓ The sale of the Alpiș Villa
- ✓ Completion and start-up of the ALC
- ✓ Growing team:



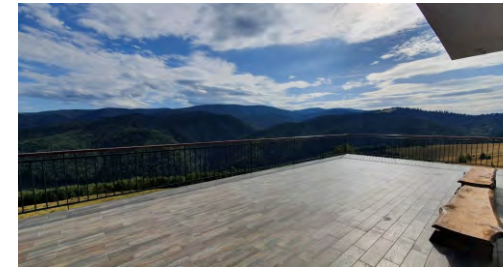
**Laurențiu Erbatu**  
ALC Operations Manager



**Ionică Zaharie**  
Păltiniș Leadership Institute  
Director



**Sebastian Solomon**  
Alpiș Youth Programs  
and Camps Coordinator



# ALC

## Alpiniş Outdoors and Youth programs

Leadership Development programs continue to take place at ALC, meanwhile, we continue to plan the start of the Theological and Spiritual Formation program.

Over the summer, we cancelled all other scheduled camps and events to allow work to continue, running only the MLI “in-house” groups:

- Two weeks of camp with the girls from Deborah House.
- The ZPC youth-sponsored camps.
- Lupeni Children's Home camp.
- Andrew Underwood, WMI, USA visited in August to do outdoor ministry training and work on a plan for developing low elements at ALC.



ALPINIŞ LEADERSHIP CENTER (ALC)



ALPINIŞ LEADERSHIP CENTER (ALC)



## The Păltiniș Leadership Institute

The Păltiniș Leadership Institute (PLI) team met a few times online and at ALC to plan the curriculum and the activities for 2023. Ionica Zaharie leads the team. Our plan during this forming stage is to start with some teambuilding conferences and build to the full two-year PLI curriculum by 2024.

- Regularly planning meetings online, we formed a PLI committee beside the larger team.
- The website addressing the marketplace is functional. We continue to make adjustments. <https://institutuldeleadership.ro/>
- The PLI conference on October 21-23 went well. The key speaker was Mr. Wouter Droppers, NL, on the theme "Modelling an Altruistic Leadership".



### 2023 PLI agenda includes:

- ✓ March 31 – April 2, teambuilding conference for young professionals; theme: Emotional Intelligence; 2 trainers.
- ✓ May 12-14, teambuilding conference, theme: Communication.
- ✓ June 23-25, teambuilding conference.
- ✓ Further events will be established for the Fall.



Every conference includes presentations, indoor and outdoor activities, DISC test and personal evaluation, optional follow-up webinars, and coaching.



# CHILDREN AT RISK

## SOCIAL CONTEXT

### Demographic Data

According to the data published by the National Institute of Statistics (INS) as of December 30, 2022:

- The resident population of Romania is **19,053,815** people, 1.1 million inhabitants less than the last census.
- The number of people over 65 has increased by almost half a million in the last ten years.
- The senior demographic index depreciated by nearly 20 %, rising to 121.2 older adults per 100 young people in 2022 compared to 101.8 in 2012.
- In 2022, just over 170,000 children were born, compared to almost 200,000 born in 2021, the record negative year since 1930, data transmitted by INS show.



### Child Protection

The National Agency for the Protection of the Rights of the Child and Adoptions (ANPDCA) report for 2022 shows a decrease in the number of children in the special protection system compared to 2021.

Table 1. Overview of the special child protection system

YEAR	Total children in the protection system	Children in the public foster care system	Children in the public residential system	Children in family and private residential systems (NGO, relatives, other families)	Children are aged 14-17 years in the residential system.
2021	45,212	17,124	10,128	17,960	5,887
2022	42,029	16,423	9,267	16,339	5,516

### Child abuse and exploitation in 2022

Although the ANPDCA report 2022 shows a gratifying decrease in the number of children in the special protection system compared to 2021, the number of child abuse victims reported in 2022 is 7.8% higher than in 2021.

Table 2. Child abuse statistics

YEAR	Children victims of abuse	Children abused in the family	Children victims of sexual abuse and exploitation	Girls victims of abuse	Girls victims of sexual abuse and exploitation
2021	15,925	14,240	1,406	8,840	1,224
2022	17,175	14,993	1,532	9,398	1,343

Table 3. Distribution by age

YEAR	Cases	<1 year old	1-2 years old	3-6 years old	7-9 years old	10-13 years old	14-17 years old	>18 years old
2021	Total cases of abuse, of which:	1,081	1,263	2,759	2,450	3,796	4,525	51
	- Sexual abuse	1	3	56	102	390	795	2
	- Sexual exploitation	0	0	2	3	15	36	1
2022	Total cases of abuse, of which:	1,095	1,395	2,917	2,533	4,192	5,001	42
	-Sexual abuse	0	6	54	106	468	844	7
	-Sexual exploitation	0	0	1	1	15	50	0



Human Trafficking



According to the Statistics of the National Agency against Trafficking in Persons (ANITP), between January and June 2022, 180 victims were registered, compared to 505 victims reported throughout 2021. These are legal victims. Trafficking of human beings is a complex phenomenon. Therefore, the number of presumed or potential victims is difficult to estimate.

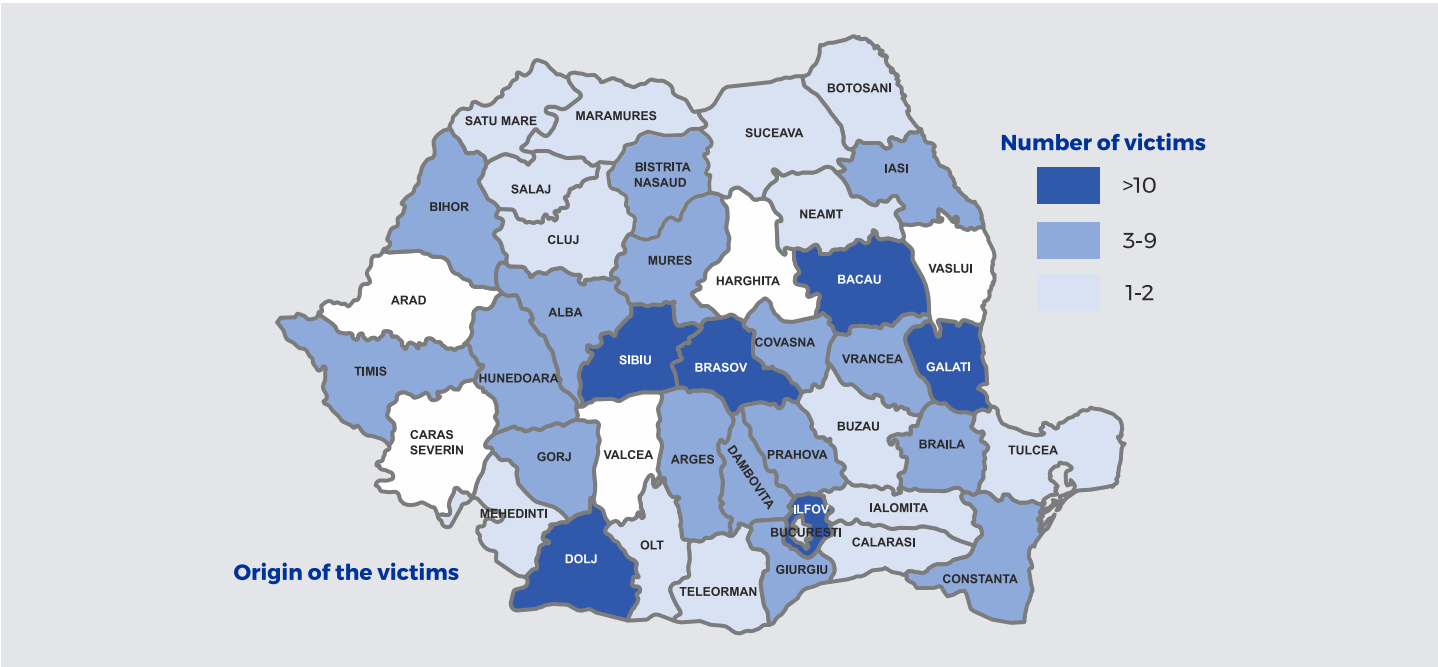
The first half of 2022 brought to the fore the refugee crisis in Ukraine and the need to take all measures to protect them, including eliminating the risk of becoming victims of human trafficking. However, according to the data available at the national level, there was no case of human trafficking among migrants with protection measures on the territory of Romania or in transit.



The number of **female victims** is overwhelming, accounting for **88%** of all registered victims. At the same time, **underage victims** are still present in considerable numbers, representing **56% of the total**.

Victims registered during the reference period have suffered multiple exploitations. Still, the **most common form of exploitation is sexual exploitation**, recorded in **83% of cases**.

53% of the registered victims were exploited inside our country, mainly through sexual exploitation and pornographic acts.



Education and social inclusion of young people



According to EUROSTAT, in 2021, 15% of young people aged between 18 and 24 years in Romania had only finished at most eight classes; this means that 214,518 young people still need to complete more than eighth grade and pursue no studies or vocational training. At the level of the European Union, our country remains the state with the biggest problem in this area of all the member countries.

Juvenile Delinquency



According to the ANPDCA report, in 2022:

- 1,030 children committed crimes for which they are not criminally liable, compared to 999 children in the same period in 2021.
- 1,719 children committed crimes for which they are criminally responsible, compared to 1,709 children in the same period in 2021.
- In Timiș County, in 2022, no crimes were committed by minors.



The legal system in Romania



From the statistical data of the Public Ministry published in the Activity Report for 2022, 62,283 defendants were sent to court, individuals, of which:

**717**  
for sexual intercourse with a minor.

**132**  
for trafficking in minors

**23**  
for non-compliance with the measures regarding the custody of the minor

Legislative changes:

According to the report, in 2022, a law was published daily, and the Government issued a GEO every second day. Thus, during the last year, **594** primary normative acts were given. According to the Romanian Constitution, all the **11,453** normative acts currently in force must be known and respected.

# DEBORAH HOUSE



## CASE STATISTICS 2022

Year	Girls at the end of the previous year	Girls coming in the current year	Girls out of service/program			Girls in service at the end of the year
			Reintegrated into the family	Transferred to other MLI programs	Integrate social	
2020	21	1	0	2	3	17
2021	17	7	0	1	6	17
2022	17	7	0	3	0	21

## EDUCATION STATISTICS

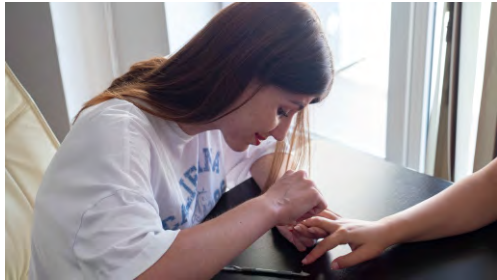
Year	Kindergarten	Preschool (cls 0)	Cls. I-IV	Cls. V-VIII	High-school	Vocational training
2020	0	0	5	6	7	1
2021	0	0	4	6	10	5
2022	0	0	5	12	6	8



## Project Development and Activities

- In the first three months of 2022, seven new girls came to Deborah House.
- Between February 2021 and March 2022, 14 new girls came in, meaning 66% of the capacity of the Deborah House are new cases.
- In the two homes, there are three sets of sisters.
- Three of the girls who came in 2022 are the sisters of one of the former beneficiaries of Deborah House.
- In 2022, the average age was 15.4 years.
- In 2022, MLI represented seven girls in the prosecution and court against abusers. Of the seven girls, three are sisters.
- In two cases, the trial ended with the conviction of the abusers, one of the cases being a human trafficking case. In one of the cases with multiple victims, it was decided not to prosecute; a case is still being tried in court, and the investigation is still ongoing for one case.
- In 2022, MLI consented to two new girls awaiting the court's decision.

- In 2022, three girls moved into Aspirations, one in January and two in September 2022.
- At the beginning of 2022, 5 girls attended and graduated from vocational training in manicure pedicure, and three others began the same vocational training in November 2022. The courses were funded through the MLI project at Timotion, "There is Life after Abuse," for the 2021 and 2022 editions, respectively.
- In the second half of July, the girls were in camp in Alpiņš, the first group of children accommodated in the new and beautiful location. Again, in 2022, Ends of the Earth Cycling, FL, USA, funded the girls' camp.
- We were glad to resume the project "Giving you will acquire," through which, with the help of Hebron FPC, the girls made over 200 shoe boxes that for Christmas went to the children from Reçaș and a disadvantaged community from Moldova-Noua, Caraș-Severin.
- In the first half of 2022, both Deborah Houses underwent relicensing. The licenses have been renewed for five years until June 2027.
- 2022 was also a year with legislative changes in child protection and adoptions, among which we mention the stricter criteria for hiring and evaluating staff. Starting with August 2022, the governmental allowance increased from \$134/month/child to \$202/ month /child, respectively for children with disabilities from \$202/ month /child to \$304/month/child.



## Partners visiting Deborah House after a hiatus of over two years

- Missio International president Mr. Kenny Woodhull, with his wife, Doris
- In June, a team from First Baptist Church, Clinton, MS, USA, coordinated by Megan Moore, visited us for the first time.
- A team from Hebron Free Presbyterian Church, from Ballymoney, Northern Ireland, UK
- A group of young people coordinated by SERVE YOUTH from Northern Ireland alternated Bible lessons for our girls, children, and young people in the Back to School and Harmony programs.
- Mt. Bethel Church, Marietta, GA, USA, organized a mixed mission team in July 2022. Four people visited, and their activities with the girls alternated with meetings in ZOOM with the team left at home.
- Starting in October 2022, our girls meet regularly, once every two months, via ZOOM with a group of teenage girls from Mt. Bethel Church. During the time spent together, the girls worship and get to know each other.



## Involvement of the local community

- The Holy Trinity Baptist Church in Timisoara supported DH through prayer and monthly donations. In addition to this, they organized occasional socializing activities for the girls.
- Bethel Baptist Church in Timișoara continued to support the work of DH and the ministries in Receaș and Buziaș, both spiritually and materially.
- The resumption of the unique Christmas service was a special event for our girls, most attending for the first time. Another first was that the house mothers thoroughly prepared the girls' worship program for the Christmas service at Bethel.
- In 2022, again, God used a local event as a blessing for DH. MLI participated in the 2022 Timotion, raising about \$5,000.00.
- The participation in Timotion brought a group of volunteers and young families from Timisoara who formed an initiative group that meets regularly with the team and girls. For starters, they organize the girls' birthday parties every month and take them shopping on a predetermined budget. In addition, quarterly, there is a one-day activity, usually on Saturdays, with all the girls, thus giving the social parents a day of respite.
- For the second year in a row, the Involved Parent Association of Timisoara organized Christmas campaigns in which families from Timisoara prepared Christmas gifts for each girl.



# BACK TO SCHOOL

## SCHOOL STATISTICS

### Projects and activities

Number of children	Kindergarten	Class 0	Cls I	Cls II-IV	Cls V-VIII	High School / Vocational School	Total
Enrolled at the beginning of the 2021-2022 school year	25	25	14	48	81	91	284
Have graduated the 2021-2022 school year	25	25	14	48	81	89	282
Awards for good academic results	25	11	11	36	46	31	160
Enrolled in the school year 2022-2023	22	12	12	46	66	84	242



CHILDREN AT RISK



➤ With the students' return to class in physical format, MLI resumed the Bible lessons with the students of the Constantin Păunescu School Center for Inclusive Education in Recaș, a school with which MLI has been partnering since 2008. Weekly, throughout the school year, we provide 16 hours of Bible lessons, grouped into two days/week.

➤ In 2022, about 80 families benefited from the aid; each family receives help once every two months, proportionally to the number of school children.

➤ We believe that the benefits of the Back to School program, with its two dimensions, spiritual and material, are also beginning to be reflected in the dramatic reduction of school dropouts among children from vulnerable communities in the Recaș administrative area. For example, in the first school year after the pandemic, at the Constantin Păunescu SCIE in Recaș, the school dropout rate was 0.7%, well below the national average. In other words, out of 91 students enrolled in high school, 89 graduated, which means 89 young people with increased chances of social inclusion.

➤ In addition to the Bible lessons in class, MLI organized for the children in the program a trip to the Roman ruins of Sarmizegetusa, where they had a lesson in ancient history and applied culture and learned about the temples of the old gods, polytheism, and monotheism.

➤ During the summer holidays, together with the SERVE YOUTH team from Northern Ireland, we organized two series of Vacation Bible School for the children from Recaș.



Christian Education class, Recaș - Doru Racovicean, MLI, RO



Field trip at Roman Ruins, RO



Team from Mt. Bethel Church, USA, visit Back to School families.



Team from Clinton First Baptist Church, USA, visit Back to School families.



Serve Youth, Northern Ireland UK - Vacation Bible School, Recaș, RO.

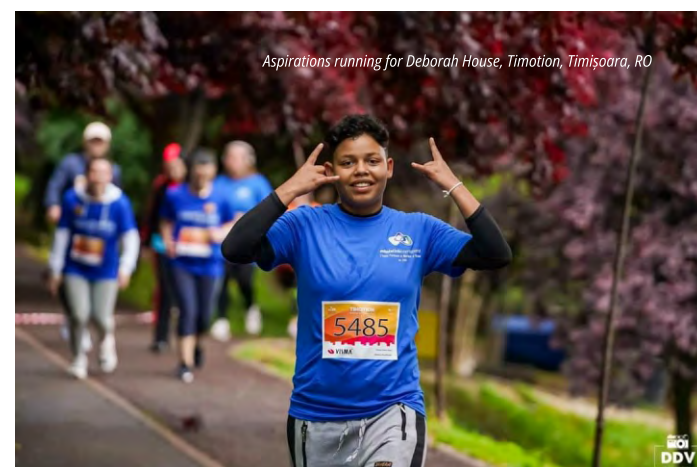
# ASPIRATIONS

## Evolution of cases in the program

Year	Total cases at the end of the previous year	Total new cases in the current year	Total cases in protected apartments	Total young women who benefit only from consigliere/training /financial aid	Total young women out of the program at the end of the year
2020	4	2	2	6	2
2021	3	7	3	5	5
2022	2	3	4	2	3

## Level of education and social inclusion January-December 2022

Level of education and social inclusion January-December 2022	Number
Vocational Training	1
High-School Day classes	3
High-School evening classes	0
College	0
University	0
Full-time job	1
Part-time job	1



Aspirations running for Deborah House, Timotion, Timișoara, RO

## Program development

- The apartment rented in 2012 covered the accommodation needs for the girls who came out in 2021 and 2022 from the two Deborah Houses.
- Between January and December 2022, there were four girls in the apartment. At the end of 2022, one of the girls, after graduating from high school, got a full-time job and moved, so at the beginning of 2023, three girls were left in the apartment.
- The legal adviser of the MLI and the case manager have revised the contract to assist the beneficiaries. In addition, some changes have been made to encourage young women who do not pursue university studies to become independent in a shorter time frame of 6-12 months after entering the program, compared to 2-3 years on average in previous years.
- Upon leaving the child protection system, each girl receives a social inclusion allowance of \$490 from the state budget.
- By the end of 2023, four girls will leave the system, one will return to the extended family, and three have requested a transfer to Aspirations.

CHILDREN AT RISK



- In the second quarter of 2022, MLI resumed the Bible lessons, spiritual counseling, and life skills workshops, with a frequency of three days a week. All activities were carried out in small groups, and starting with May, the access and involvement of MLI volunteers to the activities were also allowed. This was a great help for our colleagues Doru and Rodica Racovicean, being practically a resumption of the mentoring program. New relationships were established between mentors and young residents of the Buziaș Educational Center.
- At the resumption of activities with the participation of volunteers, each young resident of the Buziaș EC and the staff received a personalized New Testament. The acquisition of the NTs was fully supported by one of the mentors.
- During the summer, all four teams from the USA and Northern Ireland to Deborah House spent a day in Buziaș, meeting with small youth groups.
- We can continue the work in Buziaș and the ministry in the Receaș area since 2008, when MLI started the two programs, primarily due to the annual support from a family from the



CHILDREN AT RISK

# HARMONY

USA covering 50% - 90% of the budget. This is because God put on their hearts the evangelization of vulnerable children and young people, and since then, in times of abundance and drought, they pass on the blessing received.

- Last, we note Bethel Baptist Church's involvement in Timisoara's work from Buziaș. About 75% of the volunteers who regularly go to Buziaș together with Doru and Rodica Racovicean are members of the Bethel Baptist Church. Along with them, a prayer group was formed in the church with dozens of people who constantly pray for the young people from Buziaș, who support Doru and Rodica in prayer, and the volunteer mentors who accompany them.



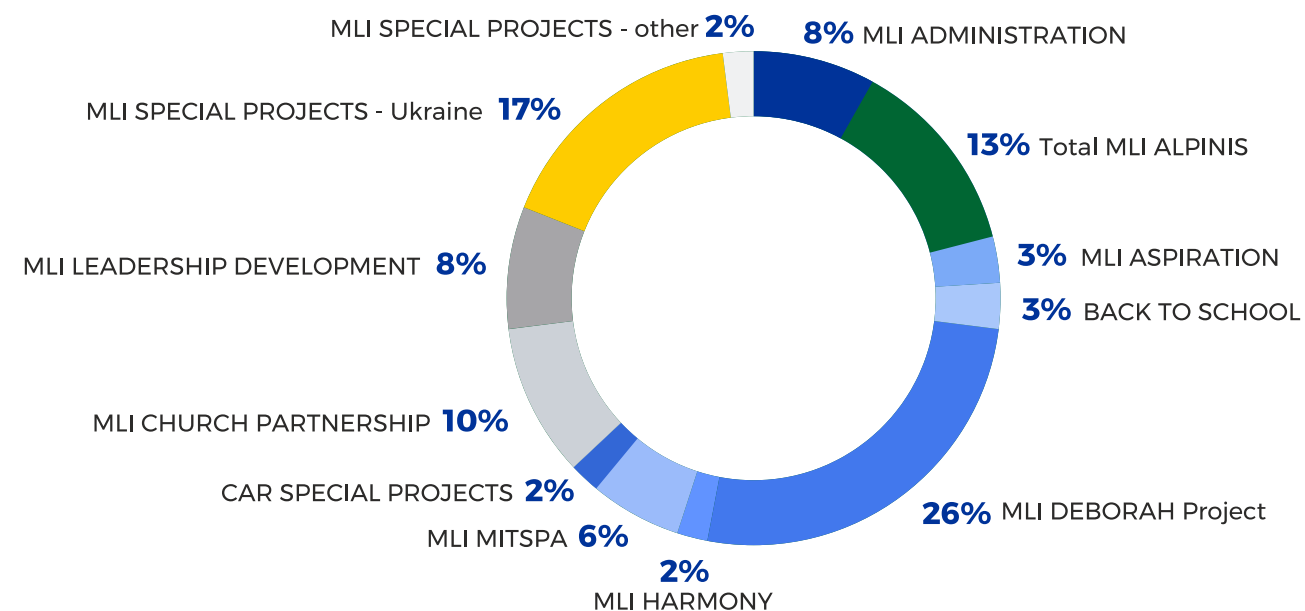
## A DIFFERENT KIND OF MLI-CAR 2022 REPORT

- **12,400 hours**  
of Bible education with vulnerable children and young people.
- **9,600 km (5,965 miles)**  
to bring the Good News to vulnerable children and young people.
- **1,440 hours**  
of psychotherapy for minor victims of human abuse and trafficking.
- **20,000 km**  
traveled for access to education safely for minor victims of abuse and human trafficking.
- **\$50,741**  
is the value of the food purchased and consumed by the beneficiaries of MLI-CAR ministries.
- **\$14,066**  
is the value of the food donation from the Timisoara Food Bank.

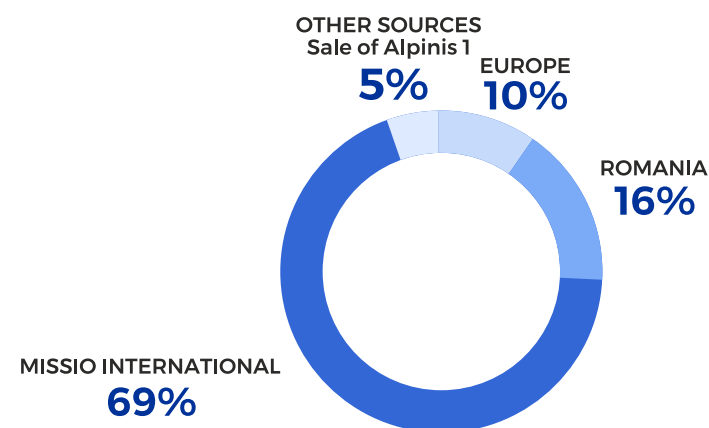
# MLI

## 2022 Financial Report

### MLI Operational Expenses Distribution per Projects 2022



### MLI Operational Income by Source



## The Audit Opinion

### INDEPENDENT AUDITOR'S REPORT

#### Opinion without reservations

1. We have audited the annual individual financial statements of FOUNDATION MISSIO LINK INTERNATIONAL (the "Foundation") drawn up on 31 December 2022, made up of a balance sheet on 31.12.2022, profit and loss account and explanatory notes to the individual financial statements, including a summary of the significant accounting policies.
2. In our opinion, the annual financial statements of the Foundation offer a real image under all significant aspects, the position and its financial performance on 31.12.2022, according to the provisions of Law no. 82/1991 accounting law, republished, as subsequently amended and supplemented. The Order of the Minister of Public Finances no. 1802/2014 on the approval of the Accounting Regulations on the annual individual financial statements and consolidated financial statements, as subsequently amended and GO 26/2000 – updated – regarding Associations and Foundations and OMFP no. 3103/2017. Following the above facts, the auditor's opinion is one **without reservations**.

#### Report regarding other legal and regulating requirements

c) Based on our knowledge and understanding acquired during the audit and the individual financial statements for the tax year ended on 31 December 2022 regarding the Foundation and its environment, we have not identified information included in the Report of the Board of Directors that is erroneous.

Date: 28.03.2023

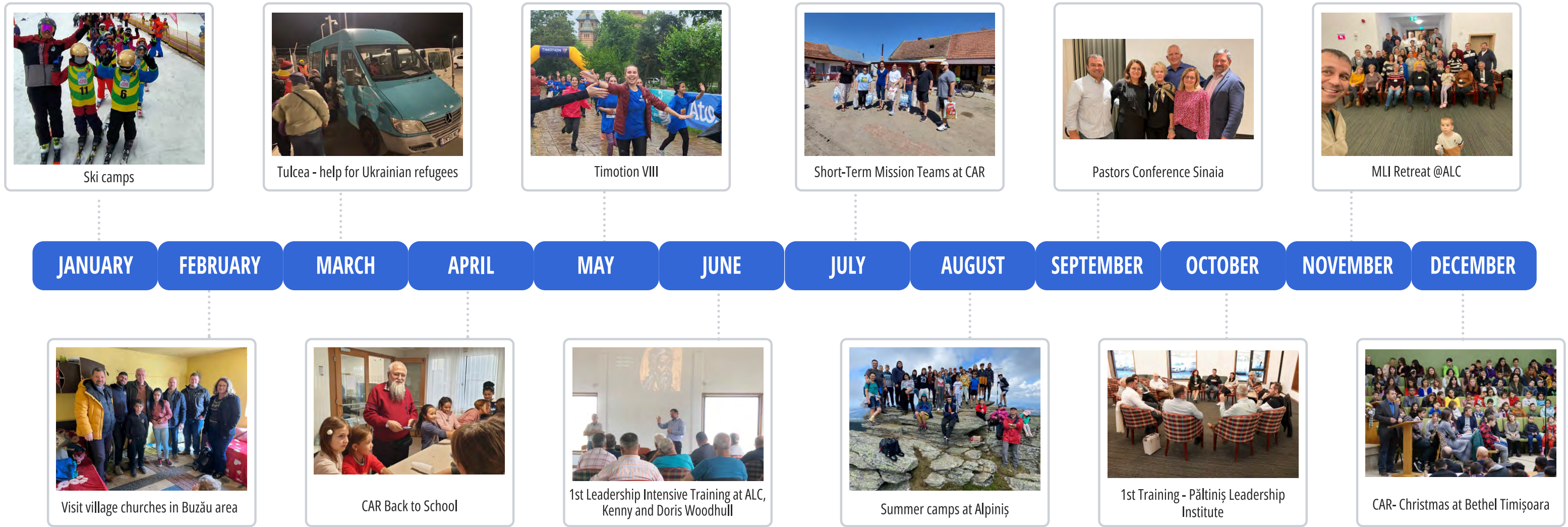
HIRSOVEANU VIOLETA

Financial auditor registered  
at the Chamber of Financial Auditors  
of Romania with no. 828/200



# MLI

## 2022 Calendar



# MLI

## Board Members

- Petru Bulica
- Lauren Clevenger
- Matt Gall
- Daniel Martinescu
- Alex Neagoe
- Jeff Normand
- Cristi Pop
- Emil Toader**, President Missio Link International (MLI)
- Kenny Woodhull**, President of MI

With loving memory we mention former board members, **MLI founder Pastor Eugen Groza**, and co-founders **Alec** and **Pati Woodhull**, Knoxville, TN.

# MLI

## Executive Team

- Emil Toader** – President, Pastor
- Lorena Rusovan** – Executive Director, MBA, Engineer
- Ioan-Sebastian Pătlăgescu** – Financial Director, Licensed Accountant

# MLI

## Organizational Chart 2022

